

Geometra bruzzanaria COSTA, 1863
a synonym of *Zethes insularis* RAMBUR, 1833
(*Noctuidae*) (*)

Valter RAINERI

Istituto di Zoologia, Università di Genova, Via Balbi 5, I-16126 Genova, Italy.

ACHILLE COSTA (1863 — Nuovi studii sulla entomologia della Calabria superiore : 48, pl. 4, fig. 10) described a new species that he ascribed to the Family *Geometridae* and that he named *Geometra bruzzanaria*, after its type locality : 'Val Bruzzana : Calabria'. The original diagnosis runs as follows :

G. fusca : alis anticis et posticis in medio marginis apicalis angulatis, griseo-purpureo-rufescentibus, supra anticis linea arcuata fusca alia extus adiacente carnea, fasciaque fusca extus profunde trisinuata, sinu antico et medio carnis : macula fere triangulari margini antico incumbente ultra sinum anticum fusca ; posticis linea transversa undulata, fascia extus trisinuosa, anguloque marginali fuscis, illis carneo marginatis ; infra alis quatuor linea transversa undulata fusca alia intus adiacente pallida, posticis linea altera punctisque duobus fuscis.

Notwithstanding the generous efforts of Dr. Paolo AUDISIO, the type series of *Geometra bruzzanaria* could not be traced in the Zoological Museum of the University of Naples, where it was formerly preserved, and it seems likely that it was lost or destroyed during the 2nd World-War. No direct comparison can, therefore, be presently made. The original description and table provided by its author, are sufficient to demonstrate, however, (see figs. 1, 1a) that this species is identical to *Zethes insularis* RAMBUR, 1833 (*Annls Soc. ent. Fr.*, 2 : 29, pl. 2, figs. 1, 2), described from Corsica : Ajaccio.

The original description of the latter is the following :

Z. Alis supra nigro-rufescentibus ; margine externo late fusco-cinerascente ; anticis lineis transversis duabus nigris, exteriore flexuosa litura albida marginata. Infra fusco-rufis, duabus lineis transversis lunulaque albo pupillata, marginibus externis in angulum medium productis.

Geometra bruzzanaria COSTA, 1863 must therefore be removed from the family *Geometridae* and placed in synonymy with *Zethes insularis* RAMBUR, 1833 (*Noctuidae* : *Ophiderinae*). *Syn. n.*

(*) This work was financially supported by the Italian Ministry for Public Education (MPI) under '40%' group 'Biogeography of the W. Mediterranean Lands', and by National Research Council (CNR) under 'National Group of Naturalistic Biology'.



Fig. 1. *Zethes insularis* RAMBUR 1833, Annls Soc. ent. Fr., pl. 2, fig. 1.

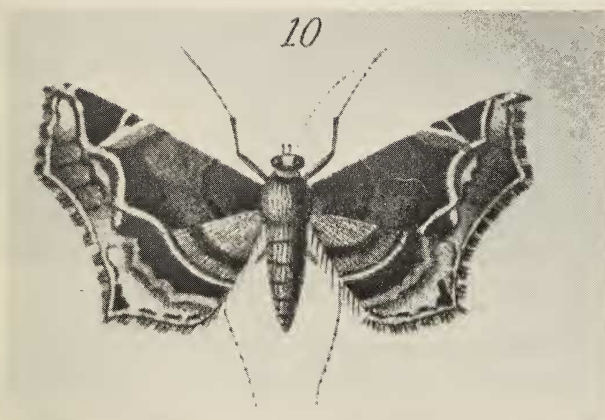


Fig. 1a. *Geometra bruzzanaria* COSTA 1863, Nuovi studii sulla entomologia della Calabria ulteriore, Napoli, pl. 4, fig. 10.

It is possible that this synonymy may have been recognized already by E. TURATI (1911 : Lepidotteri del Museo Zoologico della R. Università di Napoli — Descrizione di forme nuove e note critiche. *Ann. Mus. zool. Univ. Napoli*, 3 (18) : 27). He quotes in fact one specimen of *Zethes insularis* Hb. [sic !] from the COSTA collection. As that specimen had been collected at "San Bruzzano", it seems reasonable to suppose that it actually represented one of the types of *Geometra bruzzanaria* COSTA, 1863. Nothing was said by TURATI, however, in this respect.